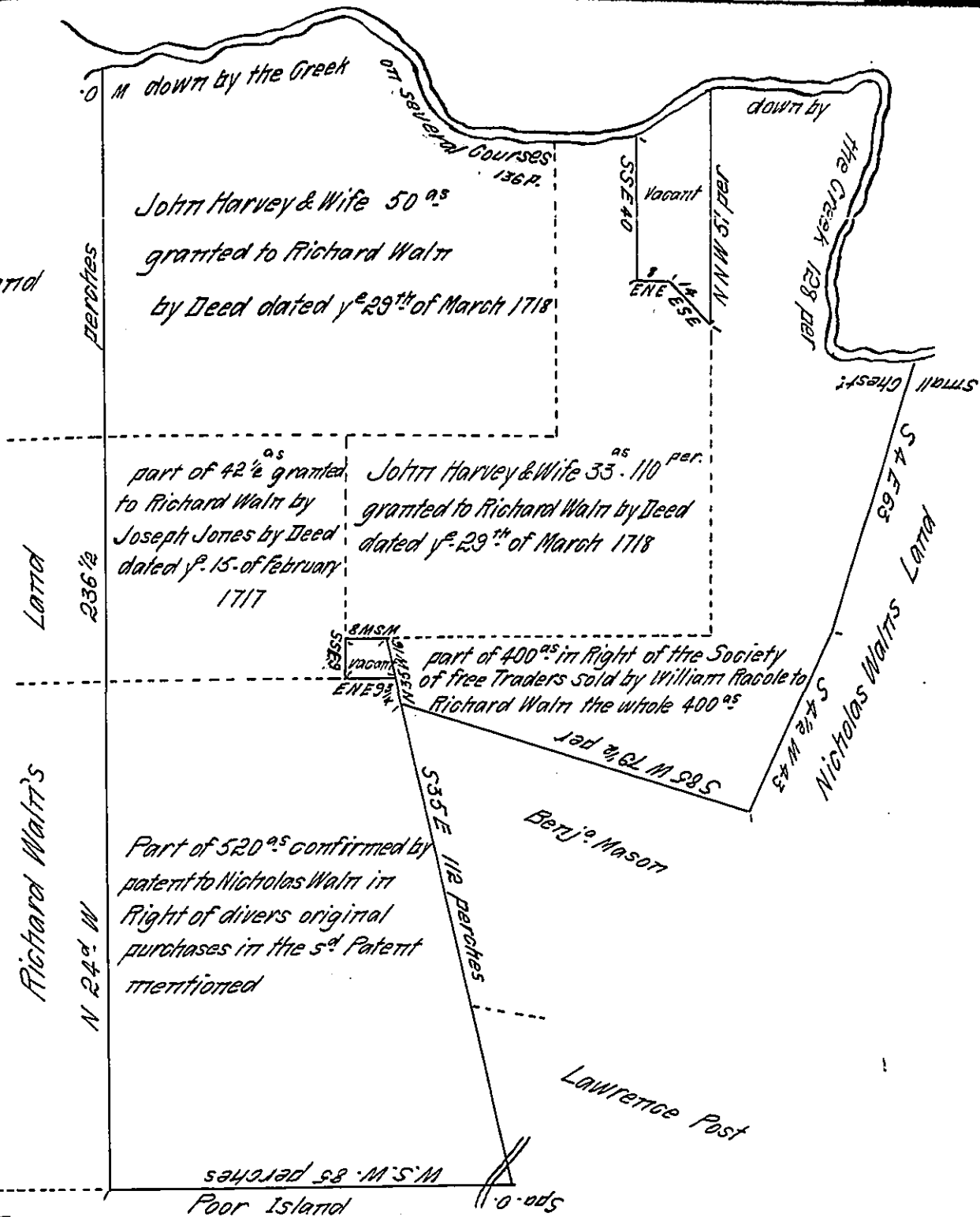


FORM No. 1.

Lawrence
Growth's Land



A Draught of a Tract of Land situate in the Northern Liberties in the County of Philad^a composed of several Tracts in divers Rights & purchases sold or granted by Richard Walt to his son Richard Walt The whole is included within the following Bounds Viz - Beg^g at a small Chestnut Tree by Wingococan Creek at a Corner of Nicholas Walt's Land Thence by the same S 4 E 63 per. to a post & S 4 1/2 W 43 to a post Thence by Betty^e Mason's Land S 85° W 79 1/2 per. to a Corner Stone Thence N 35 W 16 per, part thereof by vacant land, to a Post. Thence by vacant Land W S W 8 per & S S E 9 per. & E N E 9 3/4 per Thence S 35 E 112 per to a Spanish Oak Thence W S W 85 per to a Post Thence by Land of the s^d Richard Walt & Lawrence Growth N 24° W 236 1/2 per to a White Oak near the afores^d Creek Thence down by the same on several Courses 136 per to a Corner Thence by vacant Land S S E 40 per. E N E 8, E S E 14 per & N N W 51 per. to a Corner the aforesaid Creek Thence down by the same on several Courses 128 perches to the place of Beginning contain^g 192 Acres

Surveyed y^e 10th day of April 1740

A Copy P W^m Parsons

P Betty^e Eastburn -

IN TESTIMONY that the above is a copy of the original remaining on file in the Department of Internal Affairs of Pennsylvania, made conformably to an Act of Assembly approved the 16th day of February, 1833, I have hereunto set my Hand and caused the Seal of said Department to be affixed at Harrisburg, this twenty eighth day of October 1910

Henry Howell
Secretary of Internal Affairs.